

MATSON FOUNDATION 2014 MANIFEST

Matson[®]



THE 2014 REPORT OF THE CHARITABLE SUPPORT AND COMMUNITY ACTIVITIES OF MATSON, INC. AND ITS SUBSIDIARIES IN HAWAII, THE PACIFIC, AND ON THE U.S. MAINLAND.

MESSAGE FROM THE CEO



One of Matson's core values is to contribute positively to the communities in which we work and live. It is a value our employees have generously demonstrated throughout our long, rich history, and one characterized by community service and outreach. Whether in Hilo, Hawaii or Oakland, California or Savannah, Georgia, our employees have guided our corporate giving efforts to a diverse range of causes. While we were able to show our support in 2014 for 646 organizations that reflect the broad geographic presence of our employees, being a Hawaii-based corporation which has served the Islands for over 130 years, most of our giving was directed to this state. In total, we contributed \$1.8 million in cash and \$140,000 of in-kind support. This includes two special environmental partnership programs in Hawaii and Guam, Ka Ipu 'Āina and Adahi I Tano', respectively. Since its inception in 2001, Ka Ipu 'Āina has generated over 1,000 environmental clean-up projects in Hawaii and contributed over \$1 million to Hawaii's charities.

This *Manifest* highlights the varied accomplishments of 25 charities that Matson is proud to have touched in 2014. Their leaders, staff and volunteers have inspired us with their dedication and commitment. All of us at Matson salute them, along with the hundreds of other non-profits listed in this report, and express our heartfelt thanks for their tireless work in our communities.

Matt Cox
President and CEO

Matson Foundation 2014 Leadership

Pacific Committee

Chair, Gary Nakamatsu, Vice President, Hawaii Sales
Vic Angoco Jr., Senior Vice President, Pacific
Russell Chin, District Manager, Hawaii Island
Jocelyn Chagami, Manager, Industrial Engineering
Matt Cox, President & Chief Executive Officer
Len Isotoff, Director, Pacific Region Sales
Ku'uhaku Park, Vice President, Government & Community Relations
Bernadette Valencia, General Manager, Guam and Micronesia
Staff: Linda Howe, giving@matson.com
Ka Ipu 'Āina Program Staff: Keahi Birch
Adahi I 'Tano Program Staff (Guam): Gloria Perez

Mainland Committee

Chair, David Hoppes, Senior Vice President, Ocean Services
Patrick Ono, Sales Manager, Pacific Northwest*
Gregory Chu, Manager, Freight Operations, Pacific Northwest**
Yolanda Gonzalez, Vice President, Human Resources
Thomas Good, Director, Sales & Marketing, Southwest Region
Paula Strano Isobe, Director, Customer Support Systems & Training
Steven Rusca, Assistant Vice President, Operations, Matson Logistics
Jeffrey Yasuda, Director, Information Technology, Matson Logistics
Staff: Paul Merwin, giving@matson.com

* completed service in 2014

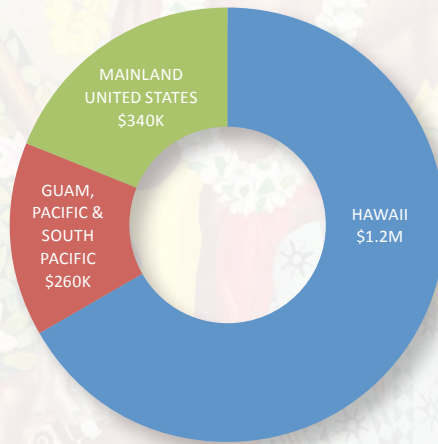
** began service in 2014

PHOTO CREDITS

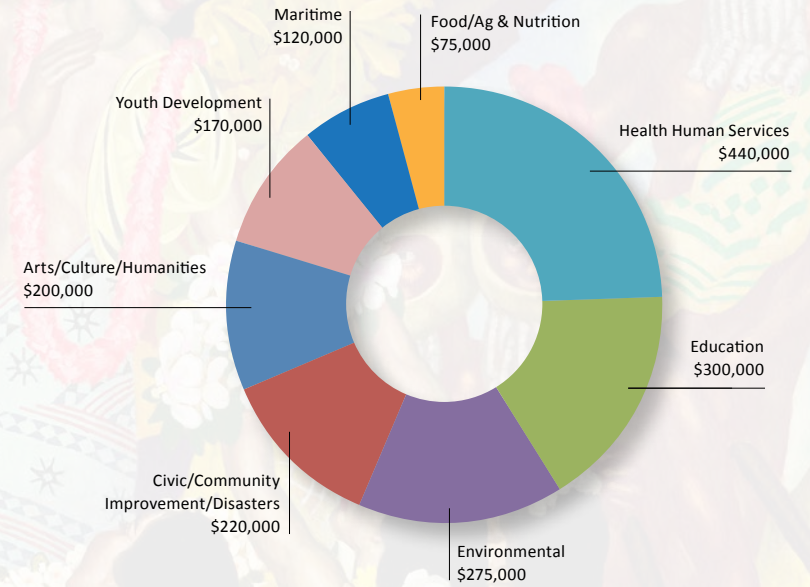
Battleship Missouri – Studio 3 Photographics
Construction Career Days – Pacific Resource Partnership
Hali'imaile Community Garden – cover and inside: Lori Feroldi
Hawaii Theatre Center – Kaveh Kardan
Imiloa – Maui Tauotaha
SFO Maritime National Park Foundation – Bob Taylor
Queen's Medical Center West – Jason Kimura
UH Akaka – courtesy University of Hawaii Foundation

Matson's cash donations totaling \$1.8 million and in-kind support valued at \$140,000 were made to the following organizations during 2014, including matching gifts and Ka Ipu 'Āina/ Adahi I Tano' program participants.

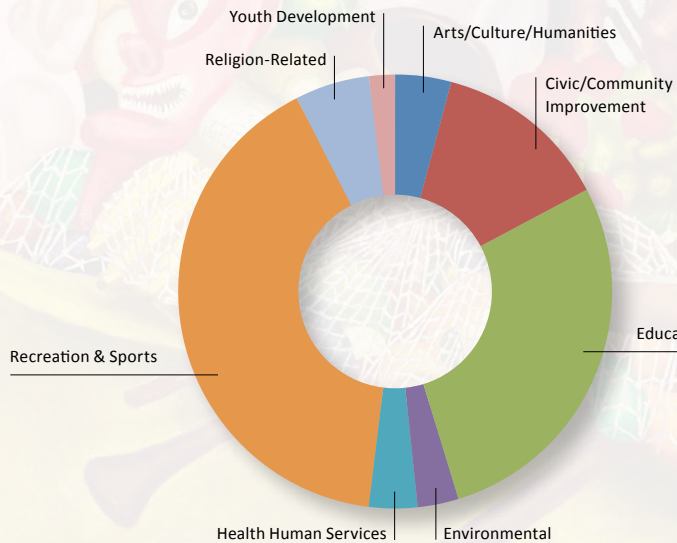
Distribution by Location



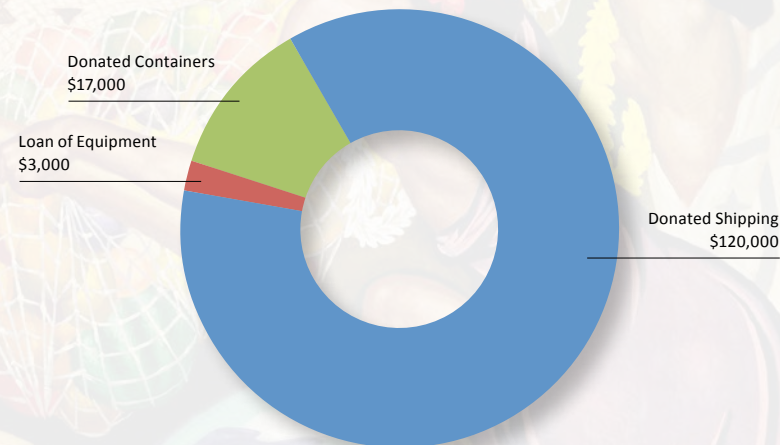
Distribution by Category



Ka Ipu 'Āina/Adahi I Tano' Participants by Category



In-Kind Contributions



Queen's Medical Center West – A state-of-the-art operating room close to home means timely surgery for emergency needs and convenient access for routine procedures. More than 35,000 patients have been served since the QMC-West opened in 2014.



Health & Human Services

If time is money, the travel time from Oahu's Leeward communities to major medical facilities near downtown Honolulu is a costly undertaking. Residents and visitors in crisis sought a 'golden hour' under treatment, not stuck in traffic, so when **Queen's Medical Center Foundation** determined they would purchase, renovate and reopen West Oahu's largest medical facility, Matson was glad to make a major donation which would bring both emergency and routine care closer.

To help reopen the Queen's Medical Center West which will serve Oahu's growing population of the island's 'second city,' our gift totaled **\$25,000**.

In the vast South Pacific, barriers to medical treatment are not crowded roads but the lack of them. Primary islands are less disadvantaged but residents of remote islands, generally smaller and less populated, lack phone systems, power generation or even the most basic of health care.

Sea Mercy has launched a fleet of large sailing catamarans equipped with modern medical equipment, supplies and medications and staffed with qualified medical professionals who all volunteer for several weeks each to bring free critical care services to island nations' most in need, including Tonga and Fiji. Matson supported the startup of Floating Health Care Clinics (FHCC) with a **\$5,000** donation



Sea Mercy – On the remote island of Cicía in Fiji, Dr. Sarah Levison (center back) smiles with patients who've just had evaluations and treatments. 80+ volunteer medical and dental professionals treated more than 6,500 islanders in Tonga and Fiji last year.

Youth

From Guam to Oakland and Long Beach, Matson supported many **Boys & Girls Clubs** in 2014, including in Hawaii--on Oahu, Maui, Kauai and the Big Island--in ways which varied from volunteer board leadership to operational funding. From golf to galas, the desired goal is the same: safer, healthier and happier boys and girls in our communities attracted to activities and engaged in supervised socialization. Our support in 2014 totaled more than **\$15,000**.

South Pacific island youth whose families have emigrated to New Zealand for a better life can end up troubled, at-risk or close to leaving school. If "it takes a village to raise a child," **The Village** in Auckland uses its clubhouse and sports programs to engage these teens, who thrive with individual guidance from mentors. Their potential for success at school, in the workplace, and in their new communities is realized by taking the right path to their dreams, which is not always the easy one. A **\$10,000** donation from Matson to The Village Community Services Trust will help.



Right: The Village – Student Ronnie Light (falling) learned to trust members of his team would catch him as they each took turns with a daring new experience, stretching their comfort zones and bonding as a group. Boys & Girls Club of Maui – The Central Maui Clubhouse, one of six on the island, turns members into 'top chefs' who learn to cook healthy food – then love eating it!

Disaster Preparedness and Response

Matson's leadership role in the transportation of goods between the U.S. West Coast ports and Hawaii, Guam and other Pacific islands means we prepare for operational performance and community preparedness in the face of natural disasters.

During 2014, Matson supported preparations for, and the recovery from, two disasters that impacted Hawaii Island: Hurricane Iselle and lava from Kilauea volcano. Matson's **dry and refrigerated containers** were both donated and loaned to support the logistics of recovery and a **\$10,000 donation to Hawaii Island United Way** helped in ways only money can buy.

Hawaii Island United Way – Loaned reefer containers aided in ice distribution post-Hurricane Iselle, critical for food safety in areas without power.



San Francisco Fire Department – The upright bow shell of the 88' vessel is under construction at a boatyard in Washington State, destined for service as a fireboat in the Bay Area.



Be Ready Manoa – Recreational boat owners learn from Coast Guard Auxiliary volunteers how to recognize a dive buoy, supporting boating safety and preventing disastrous maritime accidents.

On Oahu, **Be Ready Manoa** is the first urban organization in Honolulu to develop a strategic preparedness plan for this wide, well-populated valley, which is home to two public and five private schools and the flagship campus of the University of Hawaii. Matson was a **\$1,000** sponsor of the **2014 Disaster Preparedness Fair** held at Manoa Valley District Park Gym, during which 70 preparedness-oriented organizations informed close to 1,800 residents on how to 'be ready.'

Vessels of all shapes and sizes which traverse San Francisco Bay will be better protected by a new 'marine response asset,' funded largely by a FEMA grant and operated by the **San Francisco Fire Department**. So will workers in this key transportation area. A new 'type 1' fireboat will be able to respond to fires and hazardous materials incidents and respond medically to workers on vessels and at the terminals of the vast San Francisco Bay Region, including the Port of Oakland. Our donation to a business community campaign was **\$2,500**.





Environment

On the occasion of the 110th anniversary of the venerable **Waikiki Aquarium**, the supporting ‘Friends of’ group sat us all down for a lecture – actually, four of them!

Scientists mostly hailing from the University of Hawaii were the draw for the ocean-oriented events each attended by hundreds of life-long and youthful learners interested in sharks, sea level rise, and the effects of acidification on micro-organisms. Attendees of the final lecture learned about the sea mounts, deep ocean and great expanse of coral reefs supporting life in the Marine National Monument Papahānaumokuākea. Joining others in support of the series, Matson’s sponsorship contribution was **\$7,500**.

Analysis of debris collected along coastlines during the first 25 years of the International Coastal Cleanup—produced in Hawaii by **Keep the Hawaiian Islands Beautiful** and dubbed ‘Get the Drift & Bag It’—has shown that most of it originates on land as thoughtless ‘litter’ or the result of illegal dumping. To prevent or simply reduce this blight, KHIB reaches out to communities, businesses and government promoting recycling, beautification and greening programs. Matson’s employees volunteer each year and a **\$2,500** donation funded equipment and supplies to support the shoreline cleanup.

Keep the Hawaiian Islands Beautiful – Coastal Cleanup 2014: Malama Maui Nui volunteers at Lahaina charge ahead to clean the beach; data about the debris is collected, also, to determine the focus of future prevention efforts.



Food, Ag & Nutrition

The Matson Foundation supports local food production and meal programs in many ways, including annual aid for food banks in communities across Matson’s service area.

Matson regularly bids on local **livestock** at **4-H** auctions across the state, supporting youth who learn animal husbandry. In 2014, a steer raised on Molokai was highly rated and, once won by our bid, became a local food source for meals for clients of the **Institute for Human Services**. Matson’s support for 4-H in 2014 approached **\$12,000**.

On Maui, a **\$500** donation to the **Hali’imaile Community Garden** helped build food self-sufficiency for the 100-plus families who grow their own fresh vegetables at this Upcountry site.

Sustainability is the goal of the **Oahu Resource Conservation and Development Council**, which helps local agricultural enterprises control soil erosion and improve ocean and stream water quality. Aquaponics also is a focus for this fifteen-year-old public-private effort. Matson’s leadership level annual gift is **\$2,500**.

Oahu RC&D – Sunn hemp, standing between just-cultivated production rows, benefits the soil via nitrogen fixation, wind and water erosion control, and increased organic matter.



4-H Livestock Council – 4-H Molokai’s Cody Kamakana was rightfully proud of the champion steer he raised which traveled to Maui and then Oahu for competitions.



Hali’imaile Community Garden – Volunteers Volkan Bilen, Jason Rathje and Kevin Harrington prep a flat, level foundation for a small greenhouse at the Garden.

ECONOMIC DEVELOPMENT · MARITIME/MILITARY



Construction Career Days – Students buckled safely into the cab were able to start the engine of this rough terrain crane in order to power up the touch-screen controls. Qualified operators were close at hand, sharing their construction career experiences with students.

Economic Development

Hawaii Construction Career Days exposes students to the varied careers available in the multi-faceted construction industry. With training at the community college or university levels, they can pursue opportunities with private construction and engineering firms or at county and state agencies in the public sector. During the two-day event, skilled trades also are demonstrated and heavy equipment exhibited. Matson joined other sponsors in 2014 as a **\$5,000** donor.

Two shipping containers reached the end of their career at sea and are now in service at the **Whitmore Economic Development Corporation** as storage for this new non-profit which supports agricultural and related endeavors in the rural areas of Central Oahu. WEDC works with local farmers to build the capacity that warrants local processing and packaging for Oahu-grown produce.

Battleship Missouri – Restored officer's meeting/dining table and chairs on board the Battleship Missouri Memorial were re-covered with historically accurate blue vinyl material, and chairs marked with the titles of designated occupants.



Hawaii Youth Maritime Association – The boatswain (c) and her boatswain's mate (I) led a crew of five Sea Scouts who voyaged from Kauai to Oahu aboard the SSS Decisive; they stood watch, steered and crewed, then scraped and painted the hull in drydock, under the guidance of an (adult) Captain.



Pampanito – Boy Scouts in bunks for 'living history' overnight on board the submarine SS Pampanito, within the San Francisco Maritime National Park.

Whitmore Economic Development – Modified donated shipping containers provide shelter, storage and a place to gather/learn for the Bullit Hatchery, an aquaculture farm located in Central Oahu.

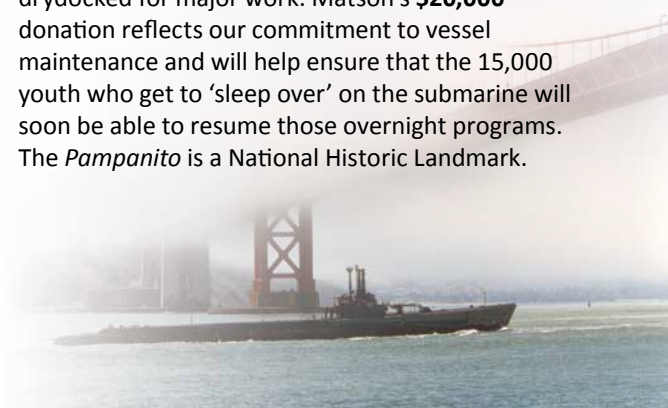


Maritime/Military

Matson's fleet of barges are towed by tugs between Oahu and the neighbor islands. Close to where our *Waialeale* moors at Nawiliwili Harbor on Kauai, there also is berthed the *SSS Decisive*, a modest vessel that serves the **Hawaii Youth Maritime Association's** small but focused cadre of teenagers who gather frequently to learn maritime skills. They prepare for two key journeys each year: circumnavigating Kauai island and crossing the Ka'ie'ie Waho channel to Oahu and back. Matson's **\$1,250** helped with maintenance, fuel and supplies.

One of a trio of attractions at our nation's historic Pearl Harbor (including the *USS Arizona* Memorial and the *USS Bowfin* submarine) is the **Battleship Missouri Memorial** upon whose deck the Japanese signed a surrender which ended World War II. After fifteen years of service to tens of thousands of visitors each years, ongoing improvements called for the replacement of five dozen wardroom chairs. Matson provided this **shipment from Long Beach** as a courtesy to the charity.

Across the Pacific, an equally historic WWII-era submarine is maintained by the **San Francisco Maritime National Park Foundation** as both a museum and a memorial. Routine maintenance helped but the *USS Pampanito* simply had to be drydocked for major work. Matson's **\$20,000** donation reflects our commitment to vessel maintenance and will help ensure that the 15,000 youth who get to 'sleep over' on the submarine will soon be able to resume those overnight programs. The *Pampanito* is a National Historic Landmark.



Education

Charitable endeavors established to recognize both of Hawaii's longest-serving United States Senators Inouye and Akaka were supported by Matson in 2014, with fundraising efforts led by two well-regarded entities. The Senators were committed to serving the public, fulfilling their responsibilities in Congress as they devoted much of their lives to improving the quality of life for the people of Hawaii.

Matson supported the **University of Hawaii Foundation's** efforts to establish an endowment to fund the **Daniel K. Akaka Regents Scholarship**, which will soon provide a 'full ride' for a promising Hawaii high school graduate. Our **\$25,000** contribution was added to by many generous individuals and businesses. The first applicants are being considered this year, and we look forward to learning about the awardees, and their accomplishments, in the years to come.

The late Senator Inouye's passing triggered an outpouring of commemorative contributions from individuals in all walks of life, including a series of gifts from Matson directed to the **Hawaii Community Foundation's Daniel K. Inouye Institute Fund**. When totaled, our gift of **\$100,000** was commensurate with our company's longevity and leadership position in this community.

Demographers have long predicted the wave of retirements of many 'Boomer-generation' public school teachers, and universities in Hawaii have stepped up to train a new generation. The reality of being 'at the helm' of a classroom can be overwhelming but new teachers (and their

students) will benefit from the **New Teacher Center** which works with excellent veteran educators to mentor new teachers, improving their effectiveness and increasing the likelihood of a strong and productive career. The Hawaii NTC is based on successful Mainland models. Matson was the first corporate contributor with a donation of **\$10,000**.

In their classrooms, teachers may have good ideas about how to instruct a concept, subject or skill. The **Public Schools of Hawaii Foundation** supports new teaching methods through a Good Idea Grant Program which teachers can tap for cash to equip and test creative teaching methods to improve student learning. Matson annually sponsors the Kulia I Ka Nu'u Awards banquet, the proceeds of which fund the Good Idea Grant program. In 2014, our support was **\$7,500**.

Two decades ago, Matson's president and CEO Robert J. Pfeiffer '37 was honored upon his retirement with a college scholarship endowment in his name at the **McKinley High School Foundation**, which provides post-secondary scholarships for McKinley students. Located in densely populated urban Honolulu, McKinley is one of Hawaii's oldest public high schools and its alumni include hundreds of business, government and community leaders serving Hawaii.

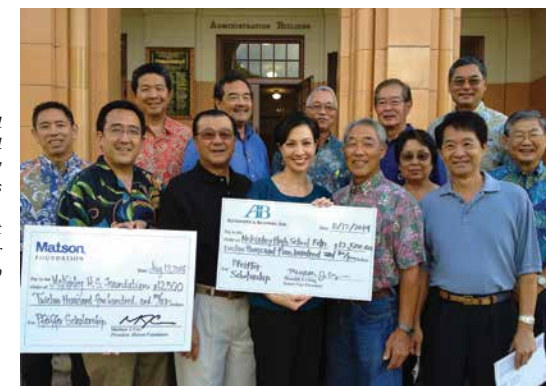
Recognizing the increased cost of higher education, in 2014, Matson augmented the endowment with a **\$12,500** additional gift.

Hawaii New Teacher Center – Hawaii's new teachers in training gather round to thank Matson's Gary Nakamatsu at a summer 2014 workshop.



UH Foundation Akaka Regents Scholarship – Senator Daniel K. Akaka was all smiles during the reception to thank donors, happy to mingle with University of Hawaii students. The first Akaka Regents Scholar will be named in mid-2015.

McKinley High School Foundation – Board members graciously accepted Matson's additional endowment, matched by former parent company A&B; Pfeiffer led both companies as top executive.



Culture & Arts

Both a restored Hawaiian heiau and dense, native plant gardens draw school children and cultural visitors to the **Manoa Heritage Center** in Manoa. Also on the site is a notable historic home with thick exterior walls made of dense volcanic rock quarried from an adjacent lava flow and crafted by Japanese stonemasons. Matson's **\$5,000** donation will help the Center to make site improvements that will increase their accessibility and capacity.

The inaugural voyage of the Polynesian voyaging canoe *Hokule'a*, during which a crewmember's life was lost, was the topic of a children's book written from the point of view of sea creatures witnessing the tragedy. "Eddie Wen' Go: Story of the Upside-Down Canoe" was authored by Marion Lyman Mersereau, a member of that voyage's crew. Her book became an acclaimed play produced by the **Hawaii Theatre Center** in 2014. A **\$5,000** commitment made Matson corporate sponsor for this maritime-related endeavor. Encore!



Hawaii Theatre Center – Sea creatures surround slack key guitarist Danny Carvalho, Jamy Torres and Michael Donato, key performers in 'The Story of the Upside Down Canoe,' which broke HTC records: nearly 10,000, young and old attended.

For a decade, Matson's support for the practice of non-instrument celestial navigation – now popularly known as wayfinding – has manifested through training and workshops in which the **'Imiloa Astronomy Center** played a key role. For the last three years, Matson has funded its Wayfinding Festival and series of Wayfinding Talks by experienced navigators and crewmembers sharing their mana'o, helping to sustain these skills. A **\$15,000** donation supported these programs in 2014.



Manoa Heritage Center – Lava rock pathways through lush native plant gardens between and around the heiau in Manoa valley.

'Imiloa Astronomy Center: Hokule'a and Hikianalia crew members chant in Hawaiian to open the Wayfinding & Navigation Festival in 'Imiloa planetarium, prior to their multi-media presentation about travels to the South Pacific.

2014 RECIPIENTS

Matson's cash donations totaling \$1.8 million and in-kind support valued at \$140,000 were made to the following organizations during 2014, including matching gifts and Ka Ipu 'Āina/Adahi I Tano' program participants.

Abunai Soccer Academy
ACCEL
Ace Hardware Foundation
Adult Friends for Youth
AFCEA Educational Foundation
Agana Guam Elks Lodge #1281
Aiea AYSO
Aiea Warriors Softball
Akoyikoyi School
Ala Moana Lions Club
Alameda County Library Foundation
Albertina Kerr Centers Foundation
Alexander & Baldwin Sugar Museum
Alex's Lemonade Stand Foundation
Aloha Medical Mission
Aloha United Way
Aloha Week Hawaii
Alzheimer's Association - Northern California and Northern Nevada
Amateur Athletic Union of The United States
American Cancer Society - Guam Field Office
American Diabetes Association - Hawaii
American Foundation for Suicide Prevention- Hawaii Chapter
American Heart Association - Guam
American Heart Association - Hawaii
American Heart Association - Puget Sound
American Heart Association - Western States
American Red Cross - Guam

American Red Cross - National
American Red Cross - Hawaii State Chapter
American Red Cross - Northern Mariana
American Society Of Mechanical Engineers
Anderson Network 56
Animun Tasi Paddling Club
Archway Classical Academy North Phoenix
Asian Art Museum Foundation
ASSETS School
Associated Parent Clubs of Piedmont
Association for the Preservation of the Presidential Yacht *Potomac*
Atkins Kroll Centennial Gift
Auburn Youth Resources
AYSO 274 U12 Boys Soccer - Team HAWAII 808
AYSO GU16 National Team Lanakila
Baseball Factory And Team One Foundation
Be Ready Manoa
Berkeley Repertory Theatre
Berrien Community Foundation
Better Business Bureau Foundation of Hawaii
Better Business Bureau Of Hawaii
Big Brothers Big Sisters Hawaii
Big Brothers Big Sisters of Guam
Big Brothers Big Sisters of the Coastal Empire
Big Island Futbol Club
Big Island Junior Golf Association
Bishop Museum
Boy Scouts of America - Aloha Council
Boy Scouts of America - Guam
Boys & Girls Club of Hawaii
Boys & Girls Club of Hawaii - Kauai Office
Boys & Girls Clubs of Oakland
Boys & Girls Club of The Big Island
Boys & Girls Clubs of Long Beach

Boys & Girls Clubs of Maui
C&S Charities
Cabrillo High School
California Maritime Academy Foundation
California Polytechnic State University Foundation
Cancer Care Assistance Foundation
Cancer Support Community
Carole Kai Charities Great Aloha Run
Carondelet High School
Castle Black Knights Football Boosters
Castle High School
Catholic Charities of Oakland
Center For Tomorrows Leaders
Central Ohio Symphony Orchestra
Central Union Church Preschool and Kindergarten
Chabot Space & Science Center Foundation
Chamber of Commerce of Hawaii
Chaminade University Of Honolulu
Cherokee Gives Back Foundation
Chi Epsilon
Chiefess Kamakahelei Middle School
Child & Family Service
Child Abuse Prevention Council of Contra Costa County
Children Maritime Foundation
Chinese American International School
Chinese Chamber of Commerce of Guam
Christian Academy
Christian Liberty Academy
Christmas Drop Organization
Church of Jesus Christ of Latter Day Saints - Hawaii Kai Ward
Chuuk Women's Council
City & County of Honolulu - May Day

City of Long Beach, Animal Care Services Department
Clausen House
Coast Guard Foundation
College of The Holy Cross
College Park Athletic Booster Club
College Park High School
Community Christian Fellowship
Community Resource Center
Compassionate Friends
Contra Costa Christian Schools Association
Contractors Association of Kauai
Cook Islands Rugby Union
Correctional Peace Officers Foundation
Cost-U-Less Foundation
Crew Soccer Club
Crossfit Andersen
CRUSH Softball Club
Crushers Football (Soccer) Club
Culture Shock Oakland
CVS Caremark Charity Classic
Cystic Fibrosis Foundation
Damien Memorial High School
Dededo Yellow Jackets Basketball
Department of Education - Maui Complex - Science/Engineering Fair
Diabetic Youth Foundation
Diamond Head Foursquare Church
Dougherty Valley High School
Downtown Athletic Club Hawaii
Duffy Books in Homes
Duk Duk Goose
DuPage Children's Museum
DuPage PADS
East Bay Agency for Children
East Bay Zoological Society

East Kauai Lions Foundation	Give Aloha Fund	Hale Kau Kau/St. Theresa Church	Hawaii Pacific University
Easter Seals Hawaii	Glide Foundation	Hale Makua Health Services	Hawaii Public Charter Schools Network
Eastside Soccer Club	Golden Dragon Project at Lincoln School	Hali'imaile Community Garden	Hawaii Public Radio
East-West Center Foundation	Golden Gate Boys Choir	Hamakua Cougars	Hawaii Recreation and Parks Society
Edward Calvo Cancer Foundation	Golden Key International Honour Society	Hanahaouli School	Hawaii Rush 99B
8th Micronesian Games Organizing Committee	Great Hearts Academies	Hanalani School	Hawaii Rush Soccer Club Girls 99
Ele'ele Elementary School	Gritty City Repertory Youth Theatre	Hawaii Army Museum Society	Hawaii Speed And Quickness
Elite Academy FC dba Hawaii Slammers Soccer Club	Guam Chamber of Commerce	Hawaii Baptist Academy	Hawaii State 4-H Livestock Council
Epiphany Church - BSA Troop 82	Guam Chapter, Association of Government Accountants	Hawaii Bowl Foundation	Hawaii State Junior Golf Association
Equine Therapy	Guam Community College Foundation	Hawaii Canines for Independence	Hawaii Theatre Center
Eta Kappa Nu	Guam Contractors Association	Hawaii Cattlemen's Council	Hawaii Titans Fastpitch
Fairfield Community Services Foundation	Guam Crime Stoppers Program	Hawaii Children's Cancer Foundation	Hawaii Wildlife Fund
Family Programs Hawaii	Guam Department of Education	Hawaii Concert Society	Hawaii Youth Conservation Corps - KUPU
Festival of Pacific Arts	Guam Educational Radio Foundation	Hawaii Conservation Alliance Foundation	Hawaii Youth Maritime Programs
Fiji Bowls - New Zealand	Guam Educational Telecommunications Corporation	Hawaii Construction Career Days	Hawaii Youth Opera Chorus
Filipino Community Center	Guam Humanities Council	Hawaii County 4-H Livestock Association	Hawaiian Acres Community Association
Fine Arts Museums of San Francisco	Guam Junior Golf League	Hawaii Culinary Education Foundation	Hawaiian Civic Club of Honolulu Scholarship Fund
1st Vanguard	Guam Memorial Hospital Volunteers	Hawaii Elite Sports Club	Hawaiian Humane Society
First Tee Oakland	Guam National Tennis Federation	Hawaii Food & Wine Festival Foundation	Hawaiian Island Twisters Booster Club
Fish Reef Project	Guam Sunshine Lions Club	Hawaii Foodbank	Hawaii-Niigata
Fisher House Southern California	Guam Ultimate Frisbee Association	Hawaii Golden Gloves Association	Haya Foundation
Food Bank of Contra Costa and Solano	Guam Volleyball Federation	Hawaii High School Athletic Association	Heard Museum
Foodbank of Southern California	Guam Women's Chamber of Commerce	Hawaii HomeOwnership Center	Helping Hands Hawaii
Friendly Isle United Fund (Molokai Community Service Council)	Guam Women's Masters Basketball Association	Hawaii Hotel Industry Foundation	HI Intensity Volleyball Club
Friends of Cabrillo Marine Aquarium	Guam Women's Masters Softball	Hawaii Institute for Public Affairs	Hickam Air Force Base Air Show
Friends of Hawaii's Urban Forest	GWHS National Honor Society	Hawaii Island Chamber of Commerce	Hi'ilei Aloha (Waimea Valley)
Friends of Iolani Palace	H.P. Baldwin High School Project Graduation	Hawaii Island Community Development Corporation	Hilo High School Class of 2014
Friends of Roosevelt Project Grad	Ha'aheo Softball	Hawaii Island United Way	Hilo Pony Baseball
Friends of The Waikiki Aquarium	Habele Outer Island Education Fund	Hawaii Kai Community Foursquare Church	Hina Mauka
FSM National Olympic Committee	Habilitat	Hawaii Law Enforcement Memorial Foundation	Historic Hawaii Foundation
George Washington High School	Habitat For Humanity - Maui	Hawaii National Guard Youth Challenge Academy	Historical Society of Long Beach
Girl Scouts of America - Guam	Halau Ku Mana New Century Public Charter School	Hawaii Nature Center	Ho Ilina
Girls Incorporated Of Alameda County		Hawaii New Teacher Center	Hokulani School Cultural Exchange Program
			Hokulele Volleyball Club
			Honolulu Bulls Soccer

2014 RECIPIENTS

Honolulu Central SDA Pathfinders
 Honolulu Country Club Foundation
 Honolulu Dance Studio
 Honolulu Galaxy Futbol Club
 Honolulu Little League
 Honolulu Museum of Art
 Honolulu Zoo Society
 Honpa Hongwanji Mission Of Hawaii
 Ho'ola Na Pua
 Hospice of Hilo
 Hui Hoaloha Ulana
 Hui Malama Learning Center - Maui
 Hui Nalu O Hawaii
 Humanitarian Service Project
 iCan Resources
 Ifog Informed Fibromyalgics on Guaifenesin
 'Imi Ho'ola
 Immaculate Conception Academy
 Institute for Human Services
 International Association of Lions Clubs
 International Hula Institute
 International Seafarers Center of Long Beach
 International Trade Education Programs
 Interscholastic League of Honolulu
 Intersarsity Christian Fellowship
 Iolani School
 iRecycle
 Isla Center for the Arts at the University
 of Guam
 Island Pacific Academy
 Izumo Taishakyo Mission Of Hawaii
 Japan America Society of Hawaii
 Japanese Chamber of Commerce and
 Industry of Hawaii
 Japanese Cultural Center of Hawaii
 Jared Allens Homes for Wounded Warriors

Joeten & Daidai Foundation
 Junior Achievement of Northern California
 Junior Achievement of Washington
 Ka Makani Anu O Ke Akua Athletic Club
 Ka Ulu Koa Volleyball Institute
 Kaikamahine Softball Club
 Kailapa Community Association
 Kaiser High School
 Kalaepohaku Class of 2016
 Kalaepohaku Project Grad
 Kalaeo High School Girls
 Volleyball Program
 Kalamakuokeao Foundation
 Kalani High School
 Kalawai Youth Baseball Club
 Kama'aina Kids
 Kamalen Karidat
 Kamehameha Day Parade - Niihau Pau Unit
 Kamehameha Schools - Project Grad
 Kamehameha Schools - Song Contest
 Kamehameha Schools Association of
 Teachers and Parents
 Kanehunamoku Voyaging Academy
 Kaneohe Cultural Foundation
 Kapaa High School - Project Grad
 Kapolei High School
 Karidat Social Services
 Kauai Chamber of Commerce
 Kauai County Farm Bureau Fair
 Kauai Economic Opportunity
 Kauai Food Bank
 Kauai High School - PAIRS/Project
 Graduation
 Kauai Sailing Association
 Kauai Underground Artists
 Kauai United Way

Kauai Veterans Council
 Kawaihoa Foundation
 Kawanakoa Middle School
 Ke Ali'i Pauahi Foundation
 Keaau East Foursquare Church
 Kealahou Volleyball Club
 Keep The Hawaiian Islands Beautiful
 Keiki O Ka Aina Preschool
 Knights of Columbus Council 16002
 Koa Kai Canoe Club
 Kolonia Youth Soccer Club
 Kona Kohala Chamber of Commerce
 KOVA (Keiki Opio Volleyball Academy)
 KQED
 Kuakini Foundation
 Kurt Suzuki Family Foundation
 La Pietra, Hawaii School for Girls
 Lahainaluna High School
 Lanakila Pacific Foundation
 Le Jardin Academy
 League of Women Voters Education Fund
 Leahi Soccer Club
 Lemonade Alley
 Life Foundation
 Lighthouse Community Charter School
 Liholiho Laulima
 Lihue Baseball League
 Lihue Pop Warner Association
 Lions Camp Tatiyee
 Loaves and Fishes of Contra Costa
 Lokahi Ohana
 Long Beach BLAST - Better Learning
 After School
 Los Angeles Maritime Institute
 Lundeberg Maryland Seamanship School
 Majuro Co-operative School

Makakilo-Kapolei Youth Baseball League
 Make-A-Wish Guam
 Make-A-Wish Hawaii
 Malama Maunalua
 Manana Elementary School PTO
 Manoa Heritage Center
 March of Dimes - Hawaii and Savannah
 Maria Artero Catholic Preschool
 Kindergarten PTO
 Marimed Foundation
 Marine Science Institute
 Marine Toys for Tots Foundation
 Maryknoll School
 Maui 4-H Livestock Association
 Maui Arts & Cultural Center
 Maui Chamber of Commerce
 Maui Community Food Bank
 Maui County Farm Bureau
 Maui County Nutrition Program/Kaunoa
 Maui Economic Development Board
 Maui Native Hawaiian Chamber Foundation
 Maui Preparatory Academy
 Maui United Way
 Mauna Loa School
 McKinley High School
 Mckinley High School Foundation
 McKinley High School Leo Club
 Merrie Monarch Festival
 Michaels Community Service Corporation
 Micronesia Islands Nature Preserve (MINA)
 Micronesia Manta Foundation
 Mid-Pacific Institute
 Mililani High School JV Soccer Team
 Mililani Volleyball Club
 Mill Valley Schools Community Foundation
 Mills College

Miraleste Intermediate School	‘O Ka’u Kakou	Pearl Harbor Hawaiian Civic Club	Rotary Club of Hilo
Moanoloa Gardens Foundation	Oahu Cattlemen’s Association	Peninsula Committee of the	Rotary Club of Saipan
Mokihana Aquatics	Oahu Junior Golf Association	Children’s Hospital	Rotary Club of Tumon Bay
Montessori Hale O Keiki	Oahu Resource Conservation & Development	Performing Arts Center of Kapolei	Rotary International
Mount Carmel Alumni and	Oahu Volleyball Club	Phoenix Symphony Association	Sacred Hearts Academy
Endowment Foundation	Oakland Children’s Fairyland	Phoenix Wrestling Club (Guam)	Saint Anthony Catholic School
Move Oahu Forward	Oakland Metropolitan Chamber of	Pi Sigma Epsilon Upsilon Chapter	Saint Francis School
Muscular Dystrophy Association-Hawaii	Commerce Foundation	Poi Dogs & Popoki	Saint Francis School (Guam)
Na Keiki Mauloa	Oakland Museum of California Foundation	Polynesian Football Hall of Fame	Saint John the Baptist Catholic School
Na Keiki ‘O Manana Chorus	Oakland Public Library Foundation	Pop Warner Little Scholars	Saint Louis School
Na Koa Football Club	Oakland Schools Foundation	Port Allen Fishing Club	Salem Academy and College
Na Lei Hulu I Ka Wekiu Hula Halau	Oasis Empowerment Center	Port Authority of Guam Employee Association	Salute to Military Golf Association
Na Wahine Pa’ani ‘O Punahou	Oahu Filipino Community Council	Portland Youthbuilders	Salvation Army - Kauai/Lihue
Nan Charity Golf Tournament	Ohio Wesleyan University	Producers Associates	Salvation Army - Riverside
Naopio Canoe Racing Association	Okinawan Festival	PTA California Congress	Samaritan’s Purse
National Conference of State Societies	Orion Academy	PTA Hawaii Congress	Samoan Rugby Union
National Defense Transportation Association	OSMD Hawaii	Public Corporation for the Arts of the	San Francisco Bay Area Science Fair
National Liberty Ship Memorial	Outrigger Duke Kahanamoku Foundation	City of Long Beach	San Francisco Fire Department
Native Hawaiian Chamber of Commerce	Paauilo Mauka Kalopa Community	Public Safety Academy	San Francisco Food Bank
Navy League of the United States	Association	Public Schools of Hawaii Foundation	San Francisco Maritime National
Navy League of the United States -	Pacific Asia Tourism Association	Punahou School	Park Association
Guam Council	Pacific Aviation Museum	Punana Leo O Koolau Loa	San Francisco Sailing Whaleboat Association
Navy League of the United States -	Pacific Buddhist Academy	Radford High School	San Francisco Suicide Prevention
Honolulu Council	Pacific Justice and Reconciliation Center	Radford High School Football	San Juan Bautista Church
Neighborhood Place of Puna	Pacific Region Baseball	Rainbow Aquatics Swim Team	Save San Francisco Bay Association
New York University	Pacific Telestations for Kahuku High	Raphael House of San Francisco	Save the Family Foundation of Arizona
Nikkei Concerns	Project Grad	Reach Out Pacific	Sea Mercy
Niue Department of Education	Pacific War Memorial Foundation	Redwood Heights PTA	Seacology
Niue Lawn Bowls	Palau Community College	Regents of the University of Michigan	Seamen’s Church Institute of New York & New
Niue Police Blue Light Charity	Palos Verdes Peninsula Rotary Foundation	Rehabilitation Hospital of the	Jersey
North Kohala Community Resource Center	Paniolo Preservation Society	Pacific Foundation	Seattle Childrens Hospital Foundation
North Shore Career Training Corporation	Partners In Development Foundation	Riggers Athletic Club	Secretariat of the Pacific Community
Northern Illinois Food Bank	Pay-Less Markets Community Foundation	Roman Catholic Church - Diocese of Honolulu	Service Corps Of Retired
Northwest Harvest	PBS Hawaii	Ronald McDonald House Charities of Hawaii	Executives Association
Notre Dame High School (Guam)	Pearl City High School	Roosevelt High School Music Boosters	Shidler College of Business
Nukuno Protestant Church (Guam)	Pearl City High School PTSA	Rotaract Club of the Marianas	Alumni Association

2014 RECIPIENTS

Shining Star Foundation
SkillsUSA Hawaii
Solomon Islands Rugby Union Federation
South Oahu County Farmers Association
SPPC Charity Golf Tournament
Special Olympics Guam
Special Olympics Hawaii
Special Olympics Southern California
Special Organization Founded to Aid Special Kids
St. Anthony Jr. Sr. High School
St. Elizabeth School
St. Francis Healthcare Foundation of Hawaii
St. Joseph School
St. Mary's Food Bank Alliance
St. Paul's Church
St. Vincent de Paul School
Stand! Against Domestic Violence
Stanford University
Sunshine Physically Handicapped Foundation
Surfing Heritage Foundation
Surfrider Foundation
Surfrider Spirit Sessions
Susan G. Komen Breast Cancer 3 Day Walk
Sustainable Coastlines Hawaii
Swim Kauai Aquatics
Tamura's Charitable Foundation
Tax Foundation of Hawaii
Teach for America
Team Piko
The 200 Club
The Alameda County Community Food Bank
The ARC of San Francisco
The Arts Castle
The Bridge dba InterTribal Youth
The Exploratorium
The Friendship Club
The Heads Up Youth Foundation
The Kohala Center
The Mount Sinai Children's Center Foundation
The Nature Conservancy - Hawaii
The Queen's Medical Center
The Rigalu Foundation
The S H A K A Foundation
The Sanctuary - Guam
The Second Opinion
The St. Andrews Schools
The University of Chicago
The Village Community Services Trust
The Works! Foundation
36 Communication Booster Club
Toberman Neighborhood Center
Tony Taniguchi Memorial Golf Tournament
Tower Foundation of San Jose State University
Triple J Fun Run/Walk
Trustees of Mount Holyoke College
Trustees of the Estate of Bernice Pauahi Bishop
Two Ten Footwear Foundation
U.C. San Diego Foundation
U.C. Santa Cruz Foundation
U.S.S. *Missouri* Memorial Association
UH Foundation - College of Tropical Agriculture and Human Resources
UH Foundation - Imiloa Astronomy Center
UH Foundation - Matching Gifts
UH Foundation - Maui Community College
UH Foundation - Men's Golf Program
UH Foundation - Regents Scholarship
UH Foundation - Shidler College of Business
UH Foundation - Student Athlete Advisory Committee
UH Manoa Student Nurses Organization
United Cerebral Palsy Association of Central Arizona
United Seamen's Service
United States Merchant Marine Academy
United States Merchant Marine Academy Alumni Association - San Francisco Chapter
United States Merchant Marine Academy Alumni Foundation
United States Naval Academy Foundation
United States Veterans Initiative - Hawaii
United States Veterans Initiative - Long Beach
United Way
United Way Of King County
United Way Of Metropolitan Chicago
United Way Of The Bay Area
United Way Of The Coastal Empire
United Way Of The Columbia - Willamette
University Laboratory School Booster Club
University of California, Berkeley Foundation
University of Guam Endowment Foundation
University of Pennsylvania
University of Washington Foundation
USO Guam
USO of Hawaii
Valley Of The Sun United Way
Valley Life
Victim Advocates Reaching Out
Waikalua Loko Fishpond Preservation Society
Waikiki Community Center
Waimea Ocean Film Fest
Waimea Outdoor Circle
Waimea Project Grad
Wardrobe For Opportunity
Washington University
Waste Not
Webco Foundation
Webbling Elementary Parent-Teacher Organization
Whitmore Economic Development Group
Wilcox Health Foundation
Williams College
Windward Sunrise Rotary Club
Women In Logistics
Yale University
Yap Traditional Navigation Society
YMCA - Armed Services
YMCA of Honolulu (Metropolitan Office)
YMCA of Metropolitan Los Angeles
Young Life Oahu
Youth Maritime Training Association
YWCA of Hawaii Island
YWCA of Oahu
Zone Baseball



Hekili Baseball – Players, parents, siblings, coaches, and other big-hearted volunteers posed for a pre-pickup photo before this team made short work of cleaning litter from Oahu's Sandy Beach. They also picked up a donation check!

Ka Ipu 'Āina and Adahi I Tano' Programs

Recent environmental attention has focused on the dangers to marine life from debris, most of which comes from shore-based sources such as storm water runoff, littering and dumping.

ON LAND

Matson's flagship land-based environmental program in Hawaii, *Ka Ipu 'Āina* (container for the land), promotes cleanup projects that preserve the natural beauty for island residents and visitors.

Established in 2001, more than **a million dollars** have been donated to charities in Hawaii through this program to date.

The program is available to non-profit groups on Oahu, Maui, Kauai and the Big Island, where each charity coordinates volunteers who conduct approved clean-up projects to receive a cash donation. Matson provides the use of container equipment and pays for related trucking expenses, and for debris disposal fees.

Many of the Oahu cleanups are conducted in partnership with the City & County of Honolulu.

On Guam, a similar program **Adahi I Tano'** (caring for the land) was established in 2012, in partnership with the Islandwide Beautification Task Force. Several times a month, volunteers can be seen clearing shorelines, streams and roadsides of both man-made and natural storm debris.

In 2014, Matson donated to **nearly 150 non-profits** through these two programs; including all related expenses, close to **\$190,000** was allocated to these cleanup efforts.

AND AT SEA: ZERO SOLID WASTE

Since 1993, Matson has been the only container vessel company that has a 'zero solid waste discharge' policy.

Each vessel in our fleet has a 'greentainer' into which all solid waste (except food scraps) is placed during voyages. Upon reaching port, the contents are sent to recycling, waste-to-energy, or other acceptable disposal facilities.

Thanks to this longstanding operating practice, Matson affirms we make no contributions to marine debris from our ocean-going vessels.





In 1938, Matson commissioned the American painter Eugene Savage to create six extraordinary Hawaii-themed murals. Public display plans were disrupted by WWII, during which Matson's ships were called upon to assume heavy operational tasks for the nation's armed forces.

When passenger vessels returned to the Pacific, post-War, the completed works of art remained in safe storage and reproductions of the paintings were used as covers for the collectible menus on Matson's Honolulu-bound liner, the *S.S. Lurline*. This Art Deco style

was used often in advertisements by Hawaii's tourism industry during a prosperous era, helping build the visitor industry. But, until 2014, when **the Honolulu Museum of Art** mounted an **Art Deco exhibit**, the Savage paintings had never been publicly displayed in Hawaii.

The Museum's exhibit, supported by our **\$50,000** leadership gift, was anchored by the Matson art and it was buoyed by the loan of hundreds of paintings, carvings, sculptures, posters, pamphlets and jewelry from many generous individuals and organizations.

The murals remain on exhibit at the Museum through mid-August.

Matson[®]